

MVSS 18 STAINLESS STEEL ELECTRIC VIBRATOR SERIES

three-phase

4 poles		
Hz	50	60
RPM	1500	1800



DESCRIPTION					MECHANICAL FEATURES						ELECTRICAL FEATURES			
Part Number	Model	Design	Frame Size	SS	Static Moment* in-lbs		Centrifugal Force lbs		Weight lbs		Power Output HP		Max Current A	
					50 Hz	60 Hz	50 Hz	60 Hz	50 Hz	60 Hz	50 Hz	60 Hz	400 V 50 Hz	460 V 60 Hz
601342	MVSS 18-100	S02	00	•	1.0	1.0	66	96	17.2	17.2	0.05	0.06	0.21	0.20
601343	MVSS 18-180	S02	01	•	2.7	1.8	171	167	19.8	19.1	0.05	0.06	0.21	0.20
601365	MVSS 18-250	S02	01	•	3.4	2.7	215	246	20.7	19.8	0.05	0.06	0.21	0.20
601344	MVSS 18-480	S02	10	•	7.3	5.1	469	471	34.8	33.0	0.13	0.13	0.41	0.40
601345	MVSS 18-920	S02	20	•	14.2	9.8	906	904	49.5	47.7	0.29	0.37	0.60	0.60
601346	MVSS 18-1310	S02	20	•	19.0	14.2	1214	1302	52.6	49.5	0.29	0.37	0.60	0.60
601526	MVSS 18-1670	S08	30	•	24.9	18.2	1584	1672	70.4	67.5	0.5	0.7	0.92	0.98
601348	MVSS 18-2150	S02	35	•	36.1	23.6	2299	2160	92.4	82.5	0.5	0.7	0.95	0.95
601349	MVSS 18-3190	S02	40	•	48.8	34.8	3109	3188	117	110	1.00	1.20	1.45	1.50
601350	MVSS 18-3870	S02	50	•	62.2	42.2	3956	3865	129	120	1.10	1.20	2.00	1.90
601351	MVSS 18-4500	S02	50	•	71.0	48.8	4519	4473	154	150	1.30	1.50	2.50	2.30
601352	MVSS 18-5380	S02	60	•	83.6	58.6	5324	5377	180	167	1.80	1.90	3.20	3.00
601353	MVSS 18-6850	S02	60	•	107	74.6	6833	6835	202	196	2.00	2.2	3.80	3.50
601354	MVSS 18-8300	S02	70	•	133	89.9	8448	8237	253	242	2.4	2.8	3.90	3.90
601363	MVSS 18-9420	S02	70	•	150	102	9517	9350	268	257	2.7	3.3	4.80	4.65

For 230 V, 60 Hz amperage, double the 460 V, 60 Hz amperage.

single-phase

DESCRIPTION					MECHANICAL FEATURES						ELECTRICAL FEATURES			
Part Number	Model	Design	Frame Size	SS	Static Moment* in-lbs		Centrifugal Force lbs		Weight lbs		Power Output HP		Max Current A	
					50 Hz	60 Hz	50 Hz	60 Hz	50 Hz	60 Hz	50 Hz	60 Hz	400 V 50 Hz	460 V 60 Hz
601342	MVSS S18-100	S02	00	•	1.0	1.0	66	96	17.2	17.2	0.05	0.05	0.43	1.00
601343	MVSS S18-180	S02	01	•	2.7	1.8	171	167	19.8	19.1	0.05	0.05	0.43	1.00
601365	MVSS S18-250	S02	01	•	3.4	2.7	215	246	20.7	19.8	0.05	0.05	0.43	1.00
601344	MVSS S18-480	S02	10	•	7.3	5.1	469	471	34.8	33.0	0.15	0.15	1.00	2.00
601345	MVSS S18-920	S02	20	•	14.2	9.8	906	904	49.5	47.7	0.16	0.24	1.20	2.80
601346	MVSS S18-1310	S02	20	•	19.0	14.2	1214	1302	52.6	49.5	0.16	0.24	1.20	2.80
601526	MVSS S18-1670	S08	30	•	24.9	18.2	1584	1672	70.4	67.5	0.32	0.41	2.15	5.15

* Working Moment = 2 x Static Moment. Static Moment = Unbalance.



Approval for European Directive 94/9/EC: ATEX II2D, tD A21 IP66, available upon request.



All listed products are in compliance with GOST R 50615, GOST 17770, GOST 12.2.030, GOST R 51318.14.1-14.2, GOST R 51317.3.2-3.3.



In compliance with all applicable European Directives.

MVSS 18 STAINLESS STEEL ELECTRIC VIBRATOR SERIES

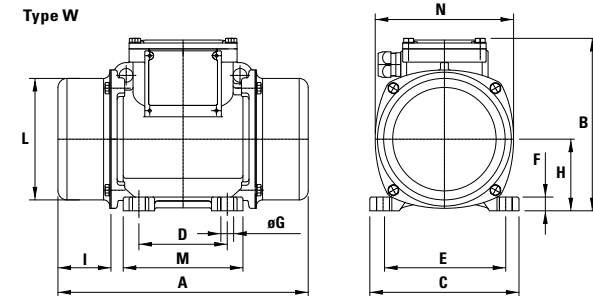
three-phase

4 poles		
Hz	50	60
RPM	1500	1800



OVERALL DIMENSIONS (inches)																
Model	Design	Type	A	B	C	D	E	Foot holes		F	H	I	L	M	N	
								øG	N°							
MVSS 18-100	S02	W	8.23	5.94	4.92	2.44-2.91**	4.17	0.35	4	0.39	2.40	1.77	3.94	4.02	4.61	
MVSS 18-180	S02	W	8.86	5.94	4.92	2.44-2.91**	4.17	0.35	4	0.39	2.40	2.09	3.94	4.02	4.61	
MVSS 18-250	S02	W	9.49(50Hz) 8.86(60Hz)	5.94	4.92	2.44-2.91**	4.17	0.35	4	0.39	2.40	2.40(50Hz) 2.09(60Hz)	3.94	4.02	4.61	
MVSS 18-480	S02	W	11.61	6.93	5.98	3.54	4.92	0.51	4	0.47	2.87	2.91	4.88	4.80	5.55	
MVSS 18-920	S02	W	13.39	7.87	6.57	4.13	5.51	0.51	4	0.59	3.25	3.58	5.63	5.39	6.30	
MVSS 18-1310	S02	W	14.96	7.87	6.57	4.13	5.51	0.51	4	0.59	3.25	4.37	5.63	5.39	6.30	
MVSS 18-1670	S08	W	14.88	8.07	8.07	4.72	6.69	0.67	4	0.67	3.68	3.86	6.61	6.30	7.17	
MVSS 18-2150	S02	W	17.09	9.13	8.07	4.72	6.69	0.67	4	0.79	4.11	4.61	7.13	6.38	7.99	
MVSS 18-3190	S02	W	17.40	9.65	9.06	5.51	7.48	0.67	4	0.98	4.57	4.13	7.91	7.09	8.86	
MVSS 18-3870	S02	W	19.29	9.65	9.06	5.51	7.48	0.67	4	0.98	4.57	5.08	7.91	7.09	8.86	
MVSS 18-4500	S02	W	22.05	9.65	9.06	5.51	7.48	0.67	4	0.98	4.57	6.46	7.91	7.09	8.86	
MVSS 18-5380	S02	W	20.67	11.22	10.83	6.10	8.86	0.87	4	1.18	5.31	5.16	9.09	8.07	9.96	
MVSS 18-6850	S02	W	23.66	11.22	10.83	6.10	8.86	0.87	4	1.18	5.31	6.65	9.09	8.07	9.96	
MVSS 18-8300	S02	W	23.19	12.72	12.20	6.10	10.04	0.93	4	1.38	6.10	5.49	10.59	8.46	11.61	
MVSS 18-9420	S02	W	23.19	12.72	12.20	6.10	10.04	0.93	4	1.38	6.10	7.01	10.59	8.46	11.61	

Type W



single-phase

OVERALL DIMENSIONS (inches)																	
Model	Design	Type	A	B	C	D	E	Foot holes		F	H	I	L	M	N	Capacitor (µF)	
								øG	N°							220 V 50 Hz	115 V 60 Hz
MVSS S18-100	S02	W	8.23	5.94	4.92	2.44-2.91**	4.17	0.35	4	0.39	2.40	1.77	3.94	4.02	4.61	3.15	25
MVSS S18-180	S02	W	8.86	5.94	4.92	2.44-2.91**	4.17	0.35	4	0.39	2.40	2.09	3.94	4.02	4.61	3.15	25
MVSS S18-250	S02	W	9.49(50Hz) 8.86(60Hz)	5.94	4.92	2.44-2.91**	4.17	0.35	4	0.39	2.40	2.40(50Hz) 2.09(60Hz)	3.94	4.02	4.61	3.15	25
MVSS S18-480	S02	W	11.61	6.93	5.98	3.54	4.92	0.51	4	0.47	2.87	2.91	4.88	4.80	5.55	5	25
MVSS S18-920	S02	W	13.39	7.87	6.57	4.13	5.51	0.51	4	0.59	3.25	3.58	5.63	5.39	6.30	32/12°	35
MVSS S18-1310	S02	W	14.96	7.87	6.57	4.13	5.51	0.51	4	0.59	3.25	4.37	5.63	5.39	6.30	32/12°	40/35°
MVSS S18-1670	S08	W	14.88	8.07	8.07	4.72	6.69	0.67	4	0.67	3.68	3.86	6.61	6.30	7.17	96/16°	160/40°

** Slot.
° Start capacitor / Run capacitor